

# MINI Cooper



Euro NCAP Category  
**SUPERMINI**

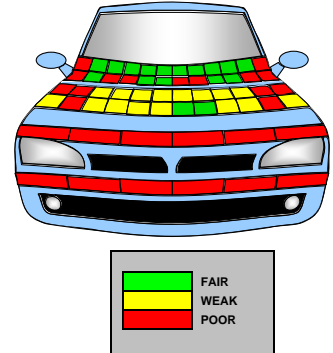
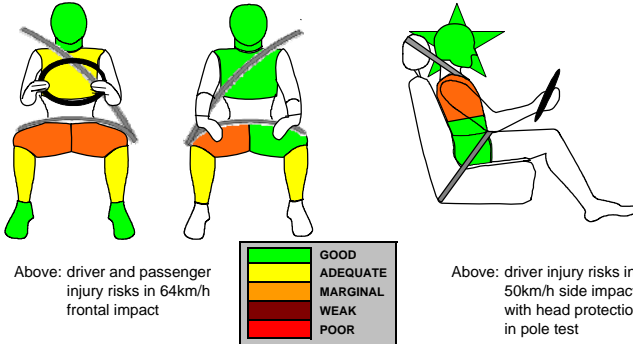


## TEST RATINGS

<b>ADULT OCCUPANT PROTECTION</b>	<b>SCORES:</b>	<b>FRONT</b> 13 (81%)
★★★★★		<b>SIDE</b> 16 (89%)
		<b>SEATBELT REMINDER</b> 3
		<b>OVERALL</b> 33
<b>CHILD OCCUPANT PROTECTION</b>	<b>SCORE:</b>	29 (59%)
★★★★☆		
<b>PEDESTRIAN PROTECTION</b>	<b>SCORE:</b>	14 (39%)
★★★☆☆		

### ADULT OCCUPANT PROTECTION

### PEDESTRIAN PROTECTION



TEST RESULTS IN FULL	
FRONTAL IMPACT HEAD	
Driver airbag contact	stable
Passenger airbag contact	stable
Steering Wheel	
rearward displacement	none
upward displacement	5mm
lateral displacement	24mm to the left
FRONTAL IMPACT CHEST	
Contact with steering wheel	none
Screen pillar rearward	24mm
Passenger compartment integrity	stable
FRONTAL IMPACT UPPER LEGS, KNEES AND PELVIS	
Stiffer structures present	yes: steering column shroud; centre console; fascia trim panel; glove-box lid, supported by fascia beam.
Concentrated knee loading	yes: fascia trim panel; glove-box lid, supported by fascia beam.
FRONTAL IMPACT LOWER LEGS, FEET AND ANKLES	
Rearward pedal displacement	brake - 92mm
Upward pedal displacement	clutch - 49mm
Footwell rupture	none
SIDE IMPACT AIRBAGS	
Head protection airbag	yes
Torso protection airbag	yes
CHILD PROTECTION	
Restraints used	
18 month old	Fair BimboFix Type II ISOFIX, rearward-facing using ISOFIX anchorages and support frame
3 year old	Fair BimboFix Type II ISOFIX, forward-facing using ISOFIX anchorages and support frame
CHILD RESTRAINTS FRONTAL IMPACT	
Airbag disabling/warning label	Pictogram on B-pillar and non-permanent text warning label on windscreen.
Forward head movement	
18 mth old (behind passenger)	protected
3 year old (behind driver)	protected
Chest Protection	
18 mth old: total load vertical load	good
3-year-old: total load vertical load	good
3-year-old: total load vertical load	fair
3-year-old: total load vertical load	good
CHILD RESTRAINTS SIDE IMPACT	
Head protection	
18 mth old (struck side)	protected
3 year old (non-struck side)	vulnerable
Head acceleration	
18 mth old	poor
3 year old	good

### CAR TESTED



Make, model and hand of drive	MINI Cooper, 1.6, RHD
Body type	3 door hatchback
Year tested	2007
Kerb weight	1140kg
VIN from which Euro NCAP rating applies	WMWFM32080TTL79291
Safety Equipment	Driver and passenger frontal airbags; side impact airbag; head-protecting curtain airbag; front seatbelt pre-tensioners and load-limiters; ISOFIX and top-tether anchorages in rear seats; front and rear seatbelt reminder system; ABS, BAS (brake assist system), electronic brake force distribution, cornering brake control, tyre deflation indicator.



# MINI Cooper

## COMMENTS

<b>FRONTAL IMPACT</b>	Structures in dashboard presented a risk of injury to the knees and femurs of the driver and passenger.
<b>SIDE IMPACT</b>	
<b>CHILD PROTECTION</b>	The passenger airbag can be disabled to allow a rearward-facing child restraint to be used in that seating position. However, information provided to the driver regarding the status of the airbag is not clear. The labels warning of the risks of placing a rearward facing child restraint in the front passenger seat are not sufficiently clear. In the side impact, the restraint of the 3 year old dummy rotated, placing the dummy's head outside the protection offered by the side of the restraint. In the same test, the head of the 1½ year old dummy contacted the interior trim. The resulting peak acceleration recorded by the dummy indicated a risk of head injury. The presence of ISOFIX anchorages in the rear seats was not clearly marked.
<b>SEATBELT REMINDER</b>	The MINI Cooper has a seatbelt reminder system for all seating positions
<b>PEDESTRIAN PROTECTION</b>	The bumper and the front edge of the bonnet scored no points for the protection they offered to pedestrians' legs.

Euro NCAP's rating applies fully only to the model with the specifications detailed here. Some equipment may not be fitted as standard to all versions in all countries. You should ensure that your car is fitted with the safety equipment you require.

