

User Manual

For CIC



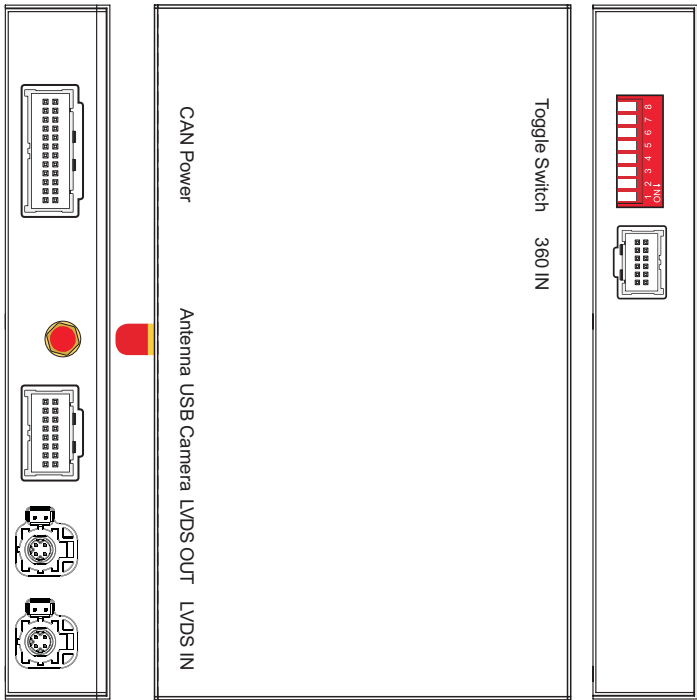
Android Auto



Apple CarPlay



Specifications



Specification

Input	USB/CVBS signal input
Input Voltage	12-16V DC
Rated Current	2A
Rated Power	24W
Control	Voice control, iDrive control
Material	Housing aluminum

Panel description

CAN Power	For power cable connection, CAN data transmission
Antenna	Wifi antenna connector
USB Camera	USB data transmission, and for reverse/front camera conenction
LVDS OUT	Connect with cable labelled 'LVDS-OUT-CIC'
LVDS IN	Connect with cable labelled 'LVDS-CIC-C19'
Toggle switch	Refer DIP code setting to set for different car models
360 IN	Exterior 360 input(VGA signal input)

Features

- Compatible with OEM microphone and external microphone
- Sound outputs via AUX in carplay system
- Support wireless/wired Carplay connection
- Support wireless/wired Android auto connection
- USB HD playback function
- Keep the OEM system function, back camera view, parking sensor, etc

Accessories



LVDS OUT cable

LVDS-OUT-CIC



LVDS IN cable

LVDS-CIC-C19



WIFI antenna



AV/USB cable

AV-USB-GP68



CAN Cable

CAN-CIC-C19-V2



iDrive Cable

CIC-KT-V2



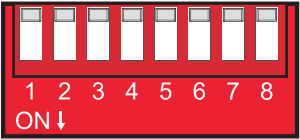


Microphone



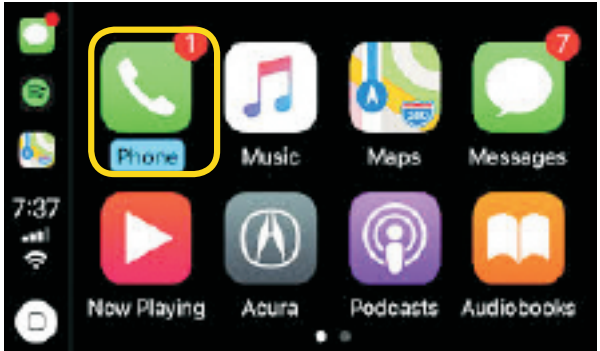
MIC adapter cable

MIC-22C-DZ

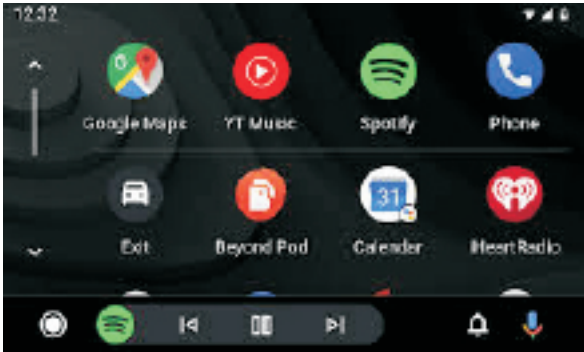
Compatible car model

Series	Car model	Production year	Toggle switch
3	E90/E91/E92/E93	2009-2012	<div>OFF</div> <div>ON</div> <div></div> <div>6.5 inch: 00010000</div> <div>8.8/10.25 inch: 00110000</div> <div>ON : ↓  OFF : ↑ </div>
5	E60/E61	2008-2009	
5GT	F10/F11/F07	2009-2012	
6	F12/F13	2009-2012	
7	F01/F02	2009-2012	
X1	E84	2009-2014	
X3	F25	2011-2013	
X5	E70	2009-2013	
X6	E71/E72	2009-2013	
Z4	E89	2009-2013	
MINI	R55/R56/R60	2009-2012	

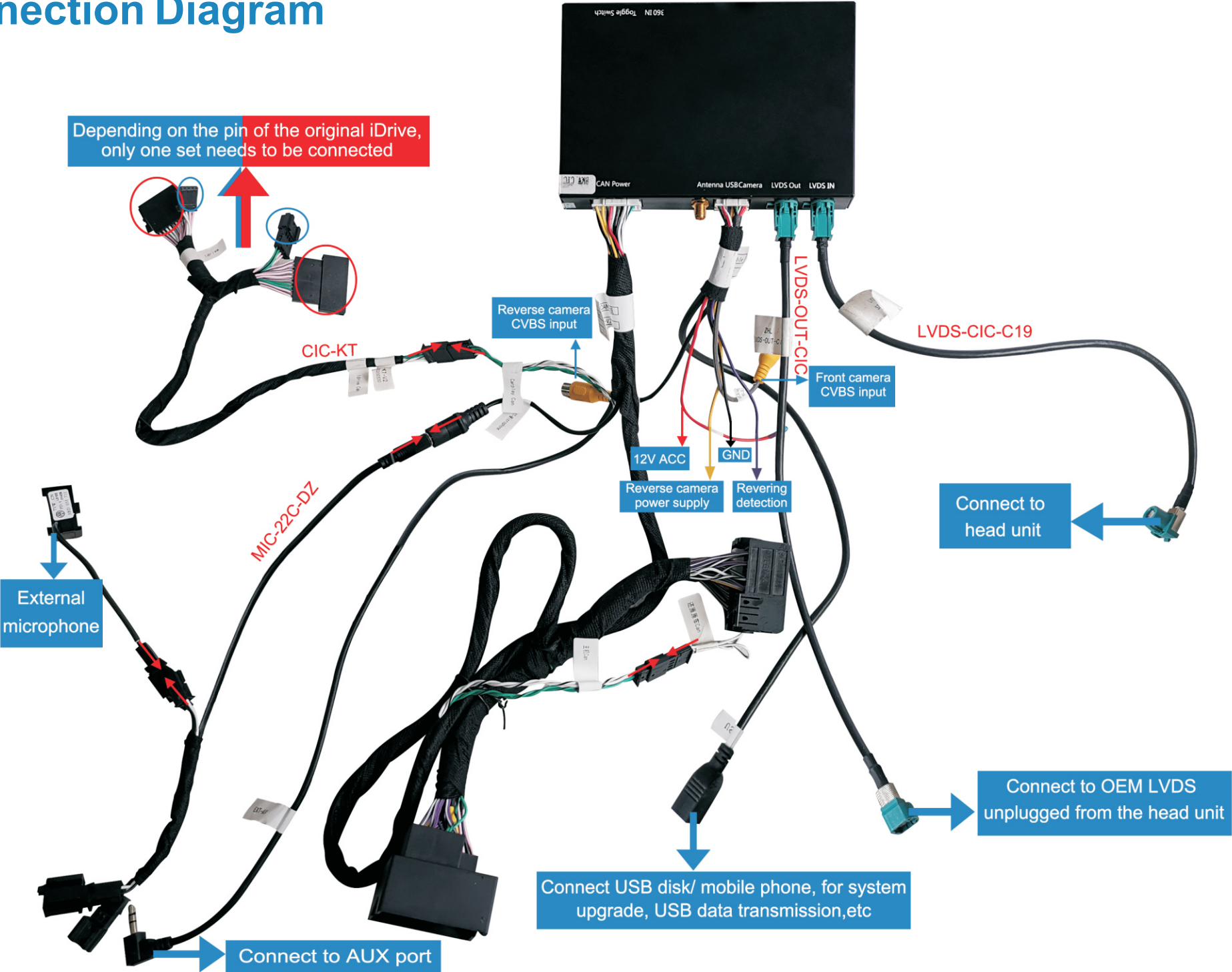
Apple Car Play



Android Auto



Connection Diagram

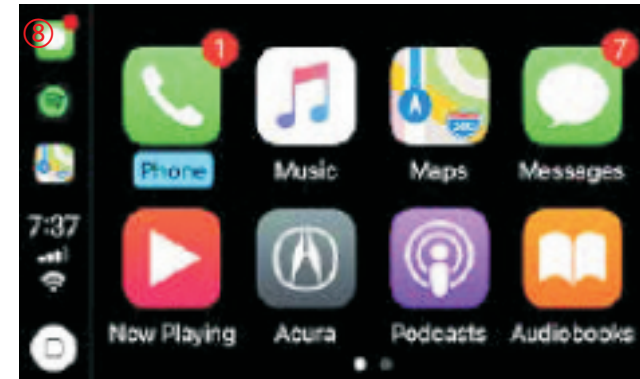


Wireless carplay connection

1. Turn on WIFI (Fig.1)
2. Turn on Bluetooth (Fig.2), and connect Carplay's bluetooth (Fig.3/4)
3. After the bluetooth connection is completed, the following prompts will pop up, click 'Allow-Use carplay' (Fig.5/6)

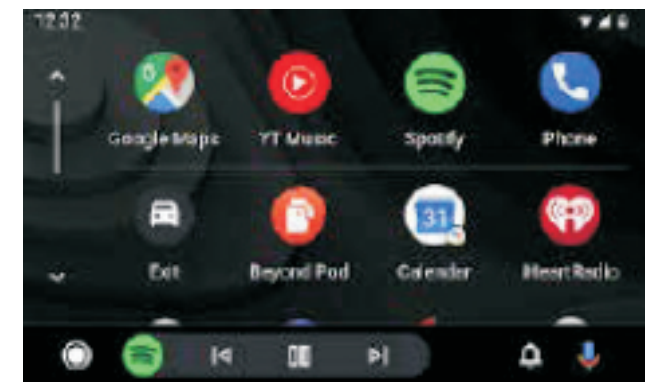
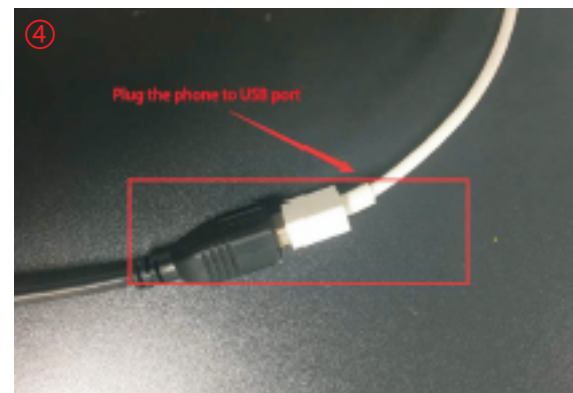
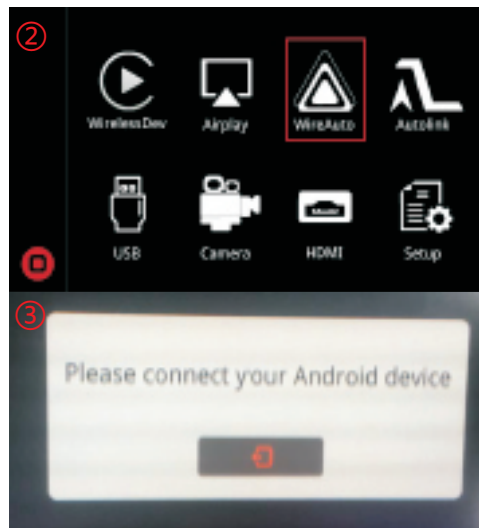
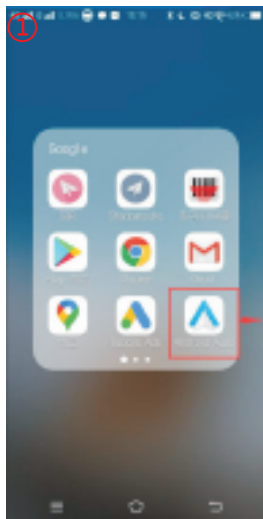


4. After the connection is successful, the Carplay icon will display on the main menu of the screen(Fig.7). And it will enter Carplay automatically(Fig.8)



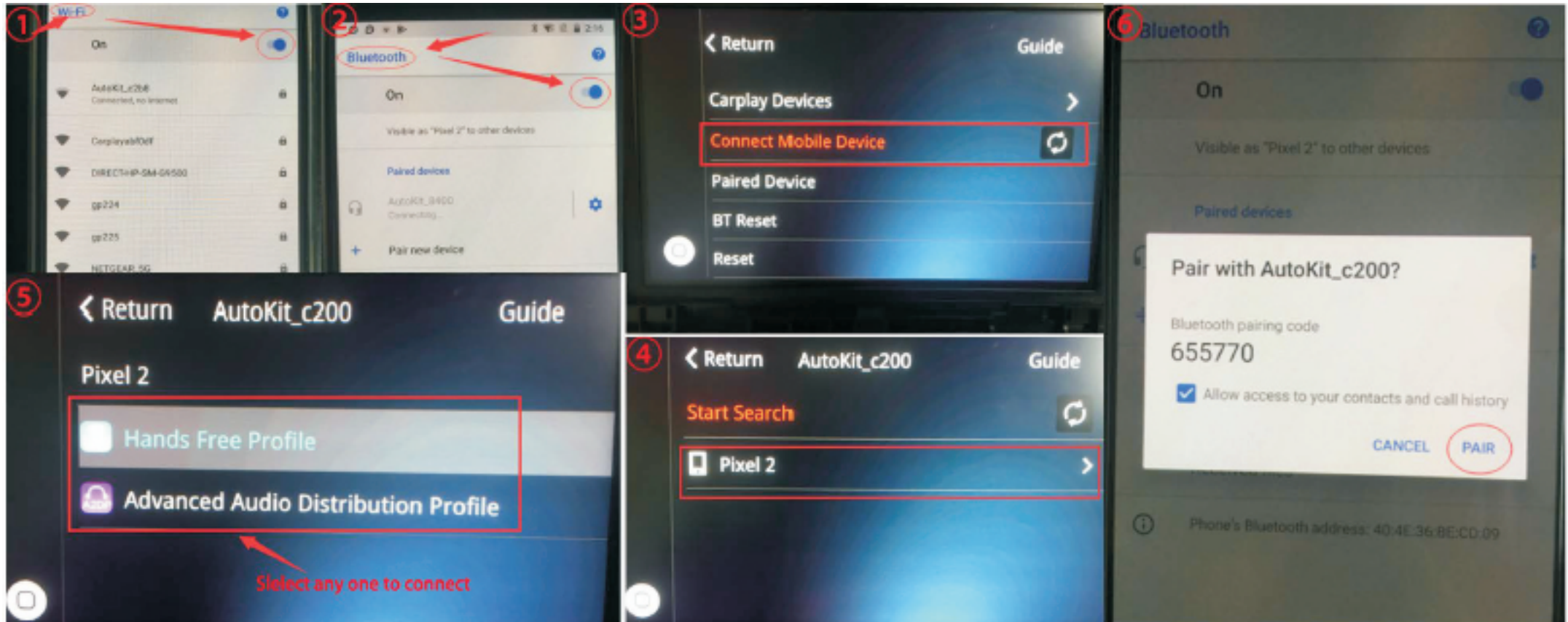
Wired Android auto connection

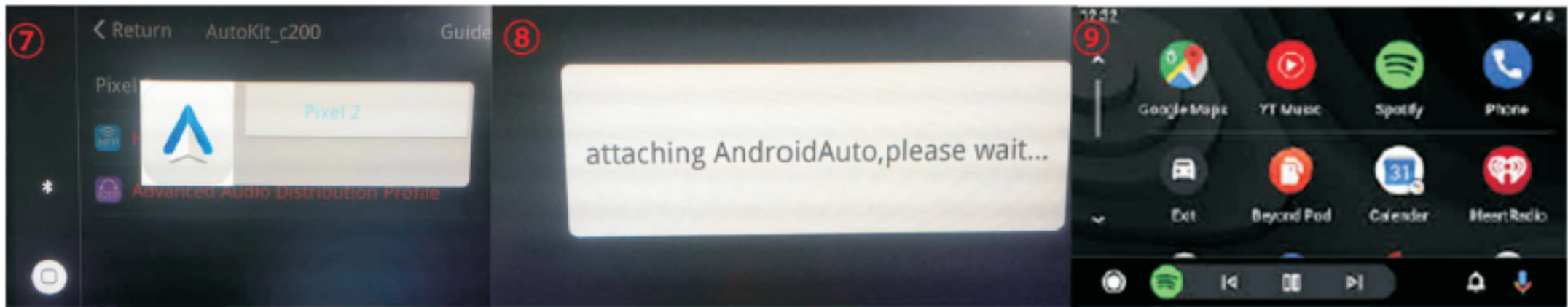
1. Download Android auto APP on your Android phone(Fig.1).
2. Click 'WireAuto' icon(Fig.2), the prompt 'Please connect your Android device' will pop up(Fig.3).
3. Plug your phone to USB port. then it will enter Android auto automatically(Fig.4).



Wireless Android auto connection

1. Turn on WIFI (Fig.1)
2. Turn on Bluetooth (Fig.2)
3. Search the Android phone's bluetooth on the screen in Carplay system(Fig.3/4/5)
4. Pair the bluetooth with your phone.(Fig.6)
5. After connecting the bluetooth, it will pop up the following prompts(Fig.7/8)
6. Then it will enter Android auto automatically(Fig.9)





Wireless Airplay connection

1. Click 'Airplay' icon first (Fig.1), the pairing information with the phone will be displayed (Fig.2)
2. Search wifi signal of Airplay and connect (Fig.3/4)
3. Turn on Airplay (Fig.5/6)
4. After connecting Airplay, it will show like Fig.7

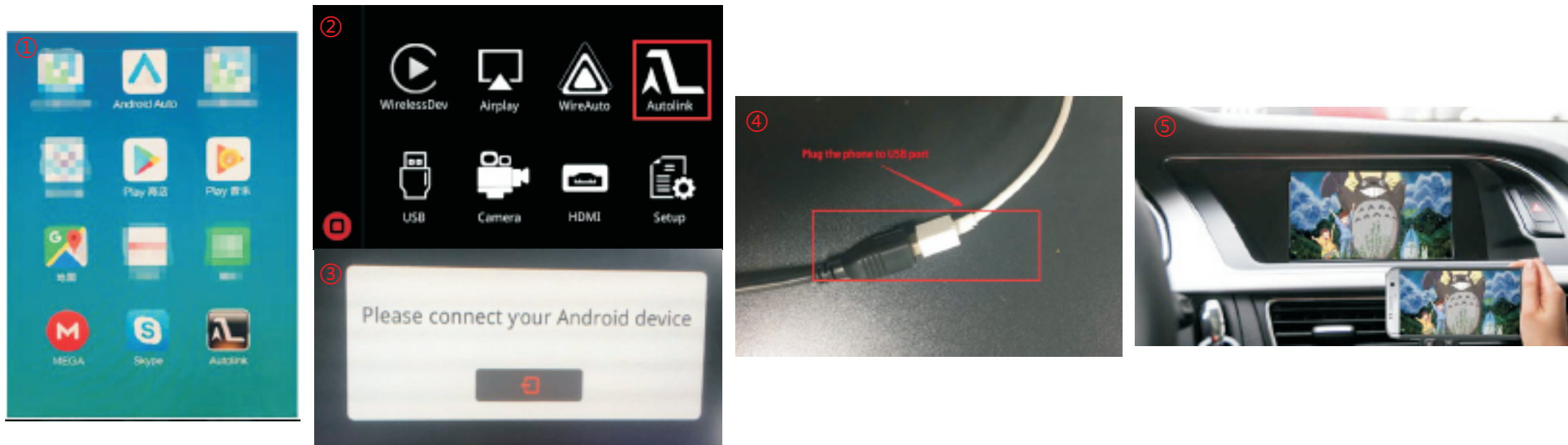
Note: If you have connected Carplay before, you need to disconnect Carplay first!

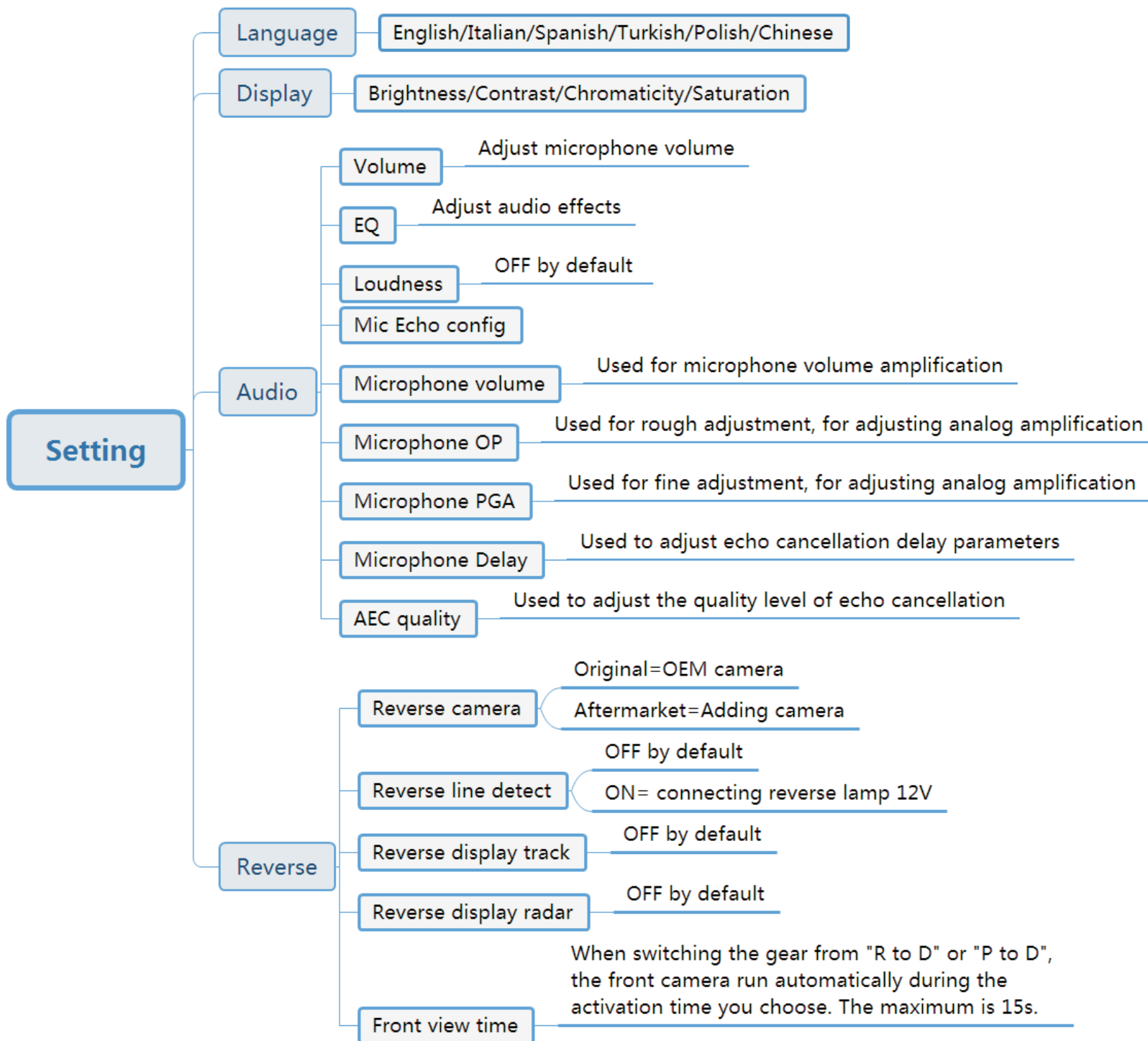




Wired Autolink connection

1. Download Android auto APP on your Android phone(Fig.1).
2. Click 'Autolink' icon(Fig.2), the prompt 'Please connect your Android device' will pop up(Fig.3).
3. Plug your phone to USB port(Fig.4). then it will enter Android auto automatically(Fig.5).





Setting

Wifi channel

36

5GHZ, Global universal channel.
(Restart takes effect)

149

5GHZ, China channel
(Restart takes effect)

6

2.4GHZ, Basic wifi channel
(Restart takes effect)

Right drive

ON=Right hand drive

OFF=Left hand drive

Camera mirror

OFF by default.

If the reverse image is displayed in reverse, set this option to ON.

Switch L/R to D/U key

OFF by default.

If the iDrive can't be selected up or down, set this option to ON.

Carplay Left Scrap

Carplay Right Scrap

0 by default. Adjust the display position of the screen.

When the left / right side of the screen shows asymmetry, this parameter can be adjusted.

Software update

For detailed information, please contact with the seller.

System version














Original buttons



BMW i-Drive Button



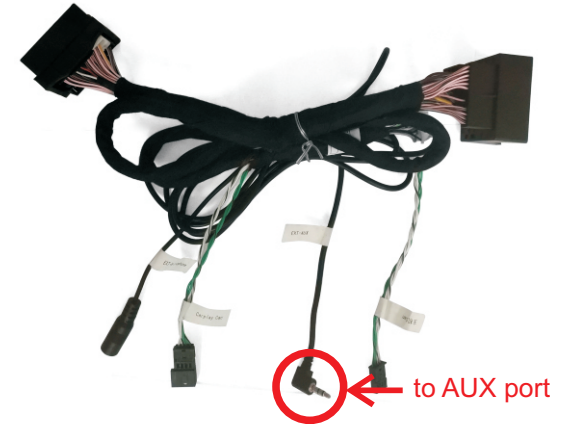
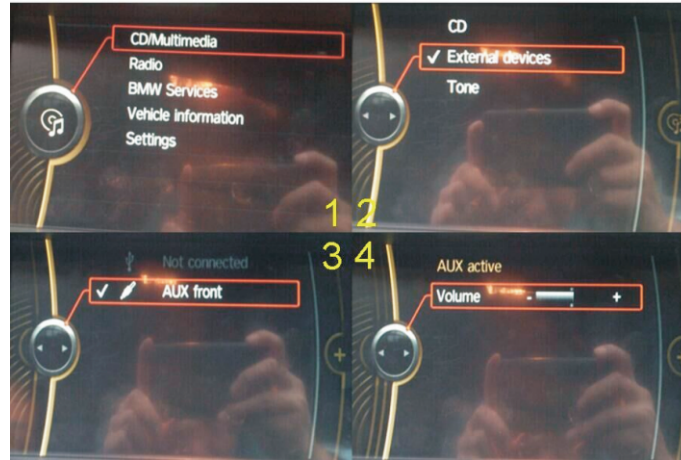
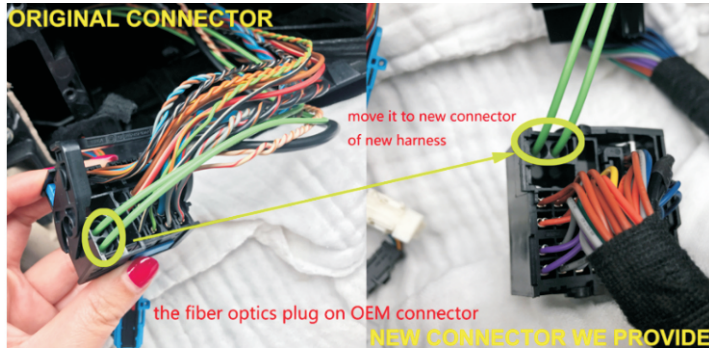
Steering Wheel Buttons

Button	Function	Operation	Remarks
1 MENU	System switching	Long press the button for 3 seconds	OEM \longleftrightarrow CarPlay
2 Back	Go back	Press the button short time	Apple Car Play Function 
	Restart	Press the button 5 seconds	Google Android Auto  You can use this function when you get in trouble
 Dial	Move the pointer Left or Right	Turn the dial Move Left or Right	Apple Car Play Function 
			Google Android Auto 
 Dial	Move the pointer Up or Down	Move the Dial Long time	Apple Car Play Function 
			Google Android Auto 
5	Volume adjustment	Press to increase/decrease the volume	Apple Car Play Function 
			Google Android Auto 
6 	"Siri" "Google Assistant"	Press the button 3 seconds	Apple Car Play Function 
			Google Android Auto 

FAQ

1.Q: I don't have sound when I connect carplay, what can I do?

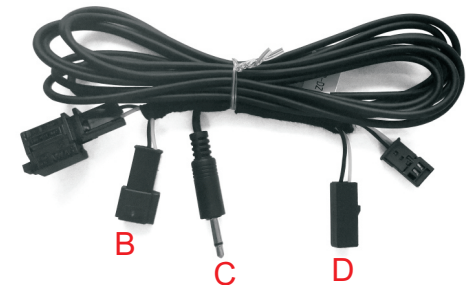
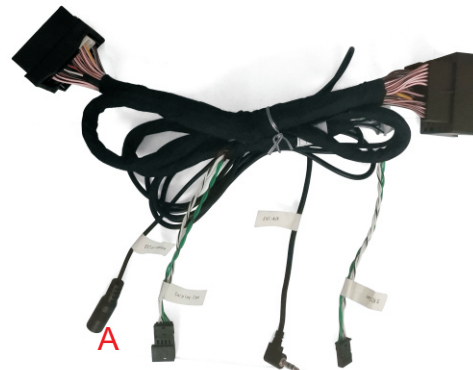
- A: 1) Connect fiber cable
2) Set AUX on OEM system
3) If there is no sound after step1/2, connect AUX cable to AUX port of armrest box



2.Q: My car has OEM microphone, but it can't work, what can I do?

A: Please use the following cable to connect to OEM microphone.

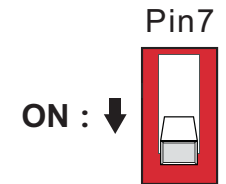
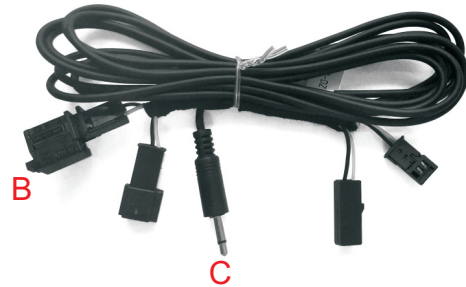
- 1) Connect A to C
- 2) Unplug blue connectors and place mic tap cable in between the connector with microphone on it and the main wiring harness coming from the roof. (B/D need to be connected)



3.Q:I don't have OEM microphone, how to connect external microphone?

A: You can do as following solutions.

- 1)Connect A with C, B with D.
- 2) Set pin7 to ON, and restart



4.Q:I can't connect wireless Carplay automatically, what can I do?

A: you can do as following solutions.

- 1) Please confirm if you turn on wifi and connect carplay's bluetooth.
- 2) If your car has OEM bluetooth, please delete the connection record, then reconnect carplay's bluetooth.
- 3) Please confirm the wifi antenna is away from metal.
- 4) Please confirm all siri permissions are allowed(Fig.1).
- 5) Reset the connection records on the phone and car (Fig.2) simultaneously, then reconnect.



4.Q:When I call someone, he can hear himself, how to do?

A:1) Adjust 'Microphone volume' to 12, 'Microphone PGA' to 24

2) Adjust 'Microphone OP' from 0 until the sound is loud enough, Keeping the OP value is as small as possible

3) Fine-tune the 'Microphone PGA' at this time. After adjusting, restart this device

4) Adjust 'AEC quality' to 2

5) Finally fine-tune the 'Microphone delay', starting from 0 alternately, until there is no echo

Note: If the sound is distorted, please adjust 'Microphone OP'

5.Q:I install the carplay, but the button on steering wheel can't work

A: Set the setting 'Enable wheel key' to ON(Fig.1)

6.Q:How to connect reverse camera?

A: Refer the following connection(Fig.2) and setting(Fig.3).

1) Connect the reverse camera to CVBS OUT labeled 'Reverse camera'

2) Connect the cable labeled '12V reverse camera(yellow)' to camera power

3) Setting → Reverse → Reverse camera → Aftermarket

