

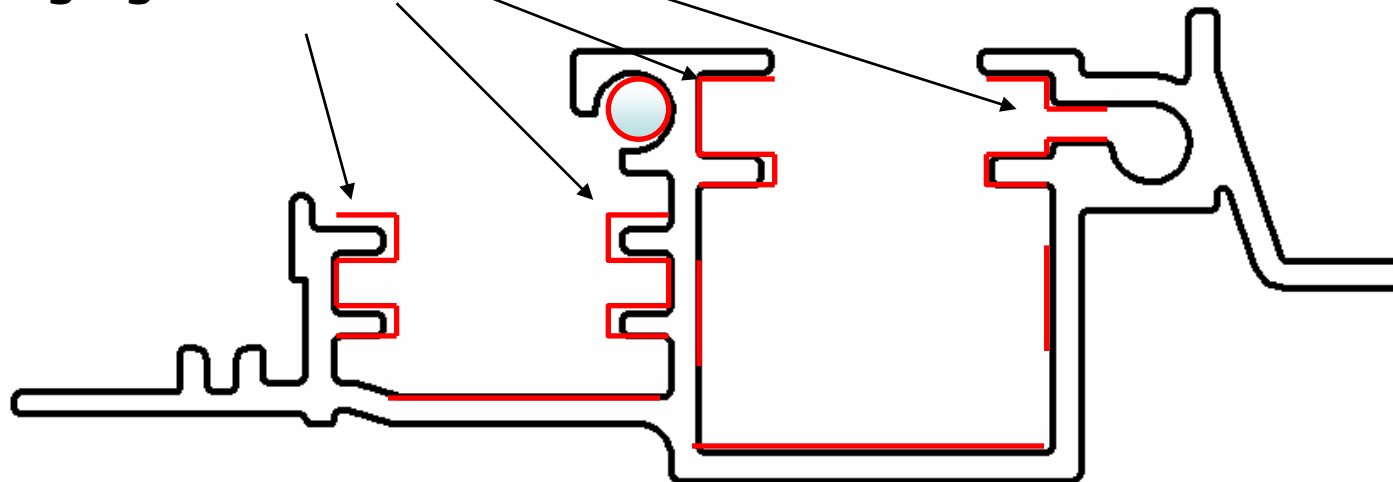
SI M54 03 08

R55/R56 Sunroof Lubrication Procedure

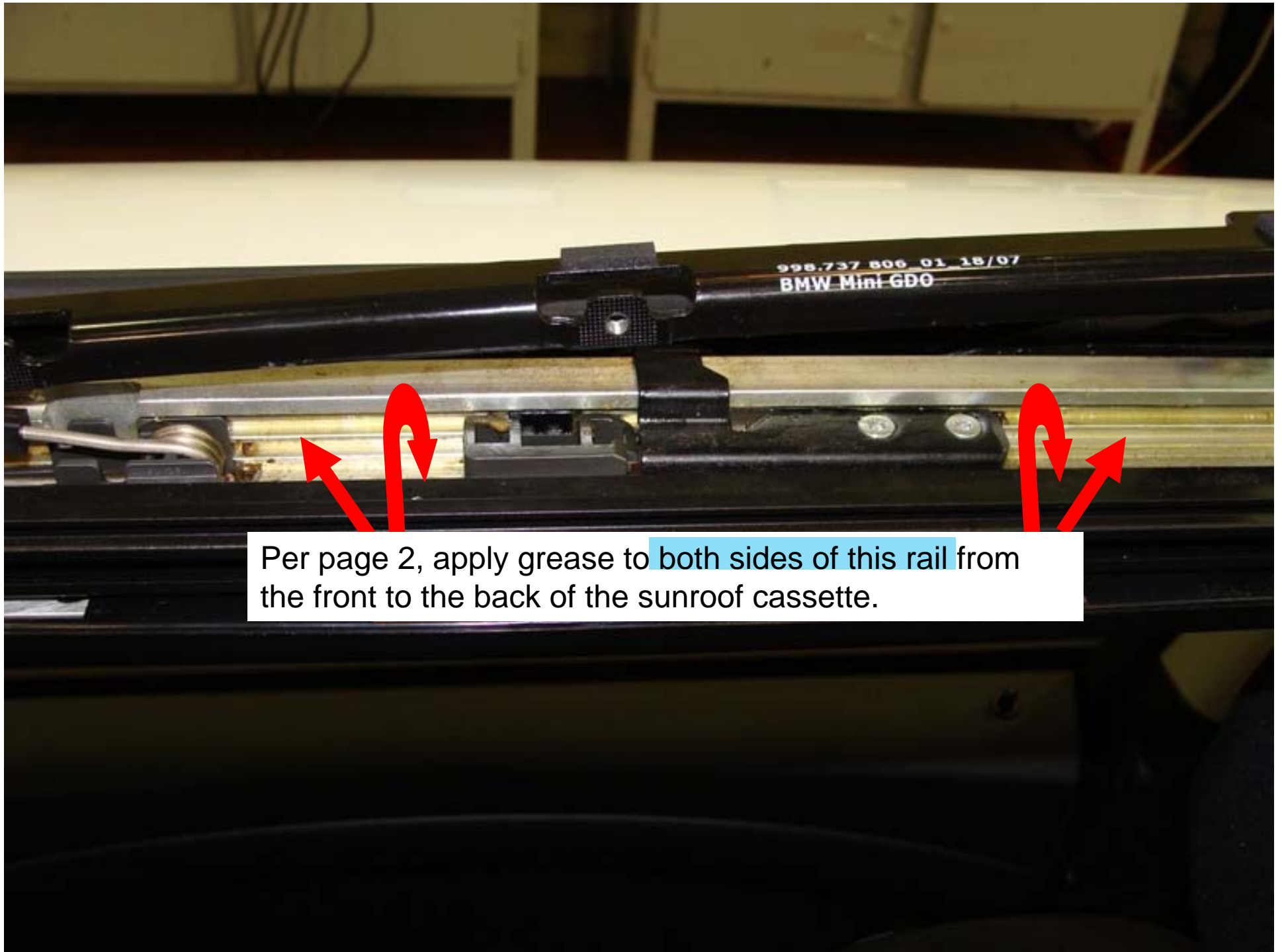


Cross-sectional view of the aluminum guide rail

Grease needs to be added to all the areas highlighted in red



The cross-section to be lubricated should run the entire length of the guide on both the left and right side of the sunroof cassette. The following 2 pages will show this in more detail.



Per page 2, apply grease to both sides of this rail from the front to the back of the sunroof cassette.

Per page 2, apply grease to the bottom of the sliding track on both sides of the guide.

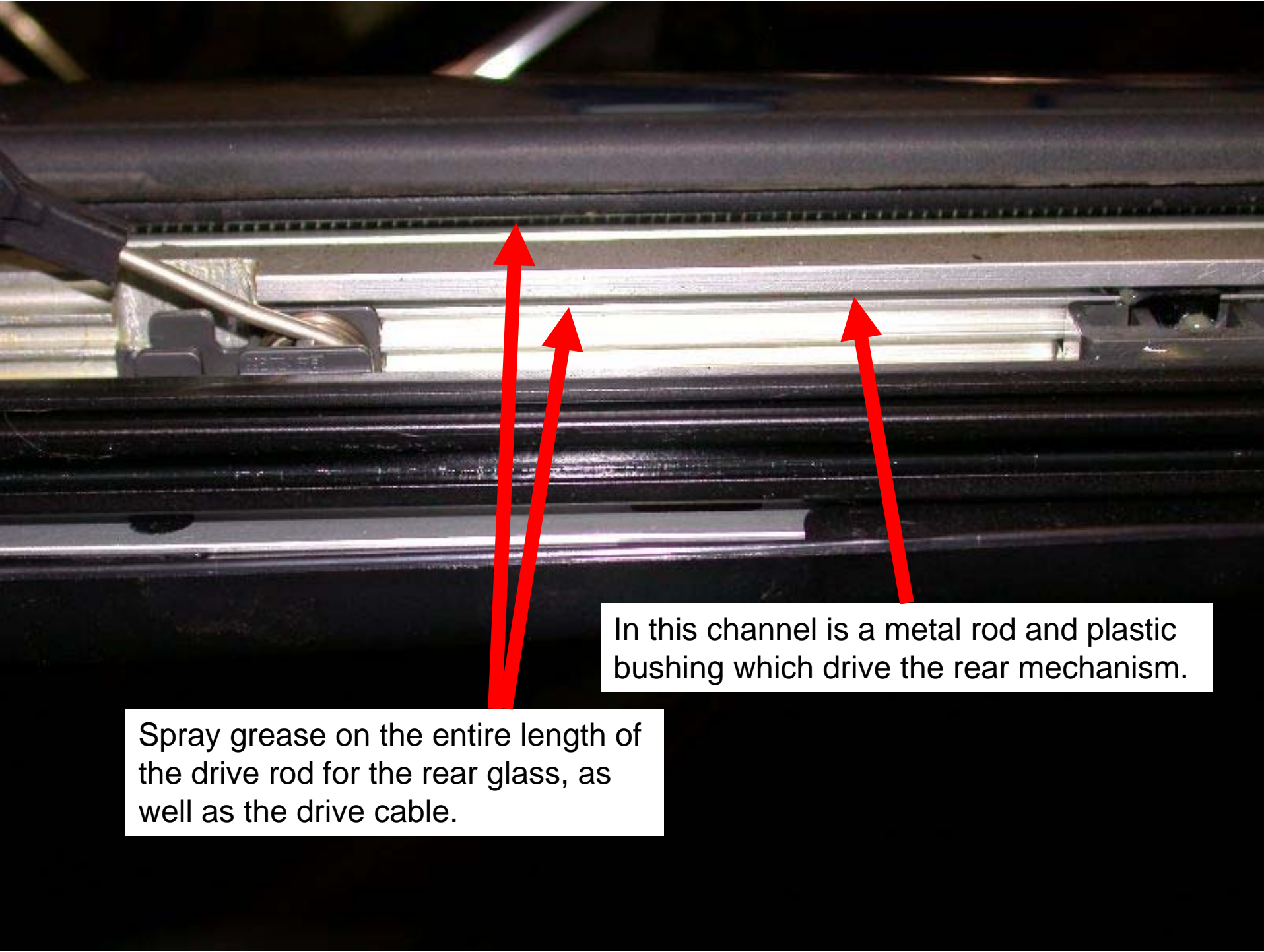
18/07



Partially open the sunroof until the rear mechanism slider (1) separates from the front mechanism slider (2).

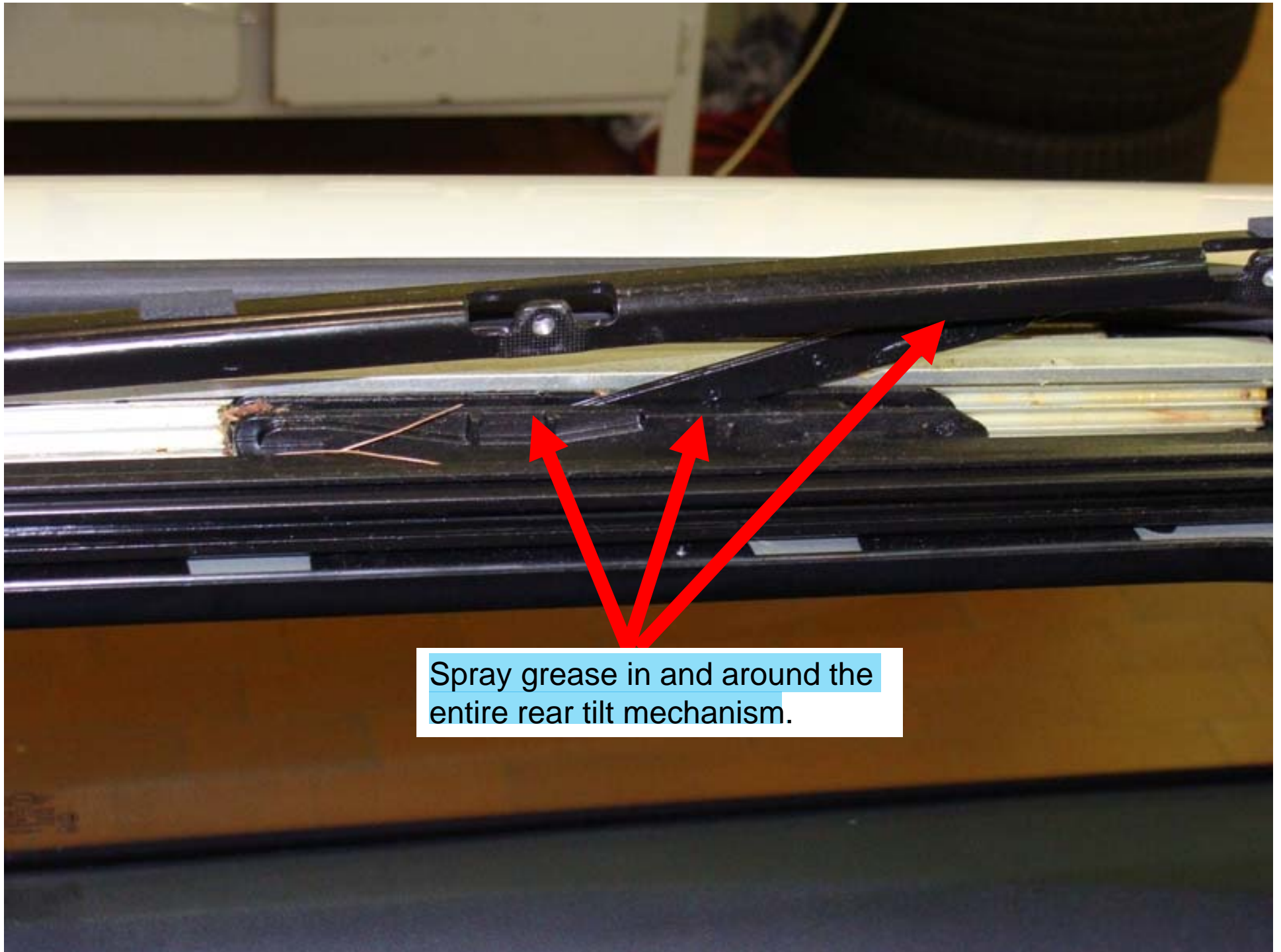


Apply grease in as well as on both of these sliding pieces to thoroughly coat the contact areas.

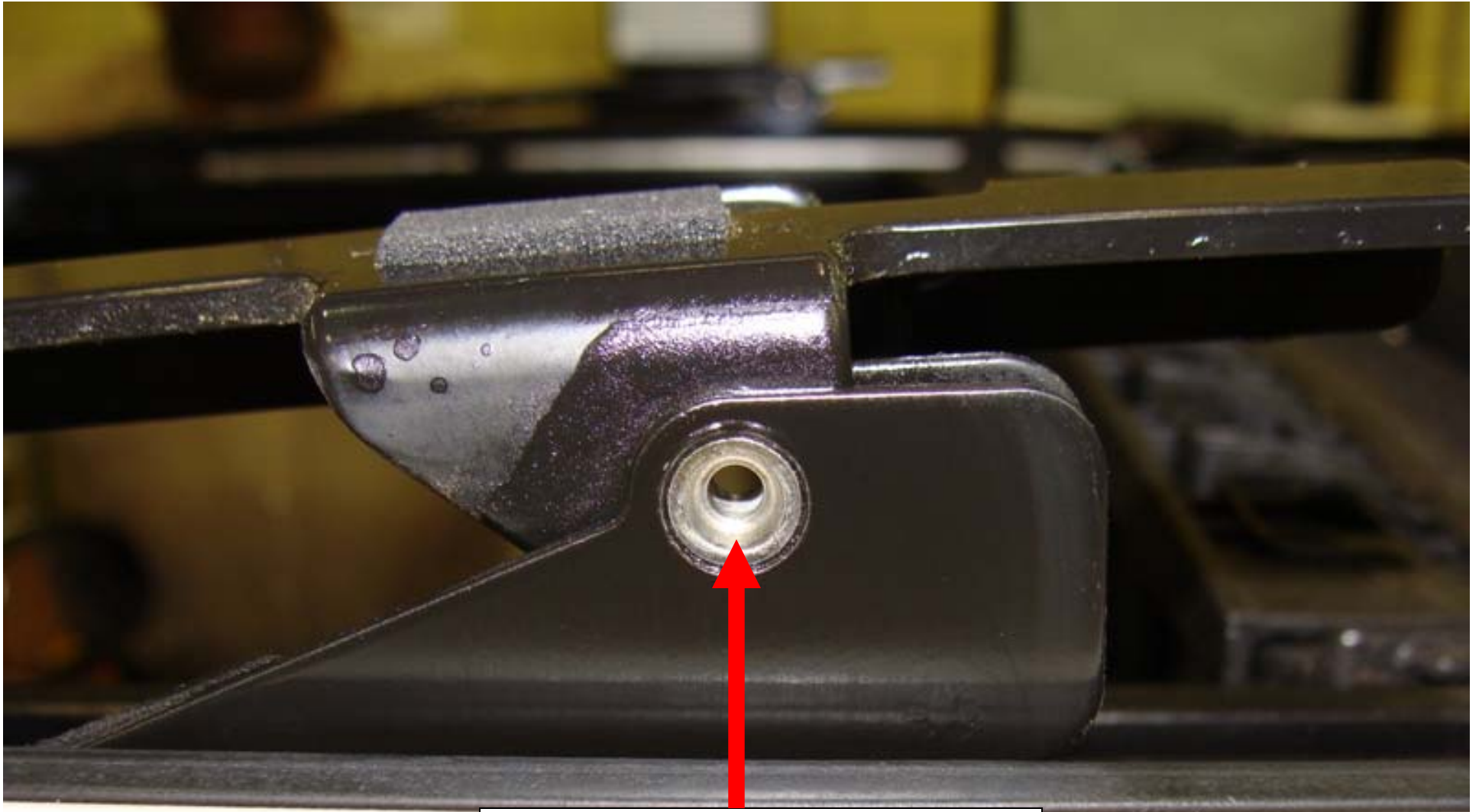


In this channel is a metal rod and plastic bushing which drive the rear mechanism.

Spray grease on the entire length of the drive rod for the rear glass, as well as the drive cable.



Spray grease in and around the entire rear tilt mechanism.



Lubricate the 8 pivot points, 2 per tilt mechanism.